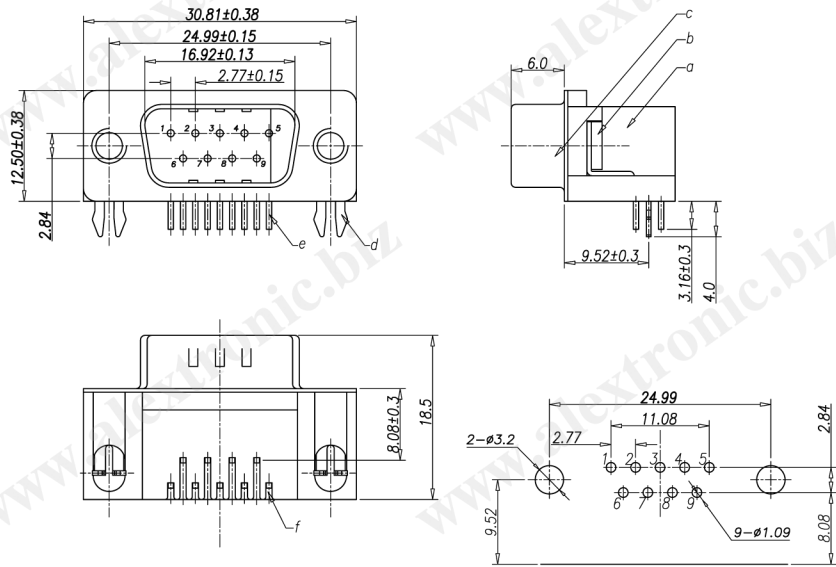


CATEGORY	DESCRIPTION	P/N #
CONNECTOR	D-SUB 9Pin Male 8.08, R/A, T/H	DBB09M-11XX0-XXXX

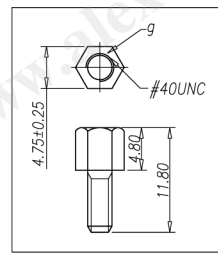
REV.	ECN NO	DESCRIPTION	REVISED	DATE
R01		New Release	Luguan	2009.04.07

SPECIFICATIONS

- CONTACT CURRENT RATING:3 Amperes.
- DIELECTRIC WITHSTANDING VOLTAGE:AC 1000/60sec.r.m.s.
- INSULATION RESISTANCE:5000 Medohms MIN.AT DC 500V.
- CONTACT RESISTANCE:25 Milliohms MAX.
- TEMPERATURE:-55°C TO +105°C.
- GROUNDING SCREW TORQUE:3kg MIN.
- SOLDER HEAT RESISTANCE:WAVE SOLDERING 260° 10sec.
- TO CONFORM TO THE "SONY" DIRECTIVE.
- GREEN PRODUCT IDENTIFICATION LABEL IN PACKING: **G.P. PASS**
- ⊗ PRESENT CRITICAL DIMENSIONS.



Recommend PCB Layout
(Jack Top View)
Tolerance: ±0.05mm
Recommend PCB Thickness: 1.6mm



PART NO.:
DBB09M-11XX0-XXXX

XX	Screw Type
01	無鍍絲
02	附鍍絲
03	鍍鍍絲
See Color Scheme	
X	Shell Plating
1	Ni Plating
X	Terminal Plating
1	Gold Flash Plating

Color Scheme

XX	Housing	Cover
00	Black	Black
01	Blue	Blue
05	Green	Green

g	Screw	2	Brass	Ni Plating	
f	Cover	1	PBT UL94V-0	See Color Scheme	
e	Terminal	9	Brass	Gold Flash Plating	
d	Board Lock	2	Brass	Tin Plating	
c	Shell	1	SPCC	Ni Plating	
b	Rivet	2	Brass	Ni Plating	
a	Housing	1	PBT UL94V-0	See Color Scheme	
NO.	PART NAME	Q'TY	MATERIAL	PLATING & COLOR	Remark

UNLESS OTHERWISE SPECIFIED TOLERANCES

SCALE: 1/1 UNIT: mm DWG. NO:

SIZE: A3 PAGE: 1 OF 1 REV: R01

APPROVED BY: WYX CHECKED BY: Pengjie PREPARED BY: Luguan

DECIMALS: X : ±0.5 X.X : ±2' X.XX : ±0.3 X.XX : ±1' X.XX : ±0.2

ANGLES: X : ±2' X.X : ±1'

Product Drawing
TERAPRO

CUSTOMER COPY